

DEVELOPMENT LAND EAST END (MLS#: 417049)

DETAILS

Price: CI\$320,000

MLS#: 417049

Type: Land

Status: Active

Block: 72C

Parcel: 274

Width: 140

Depth: 540

Acres: 1.81

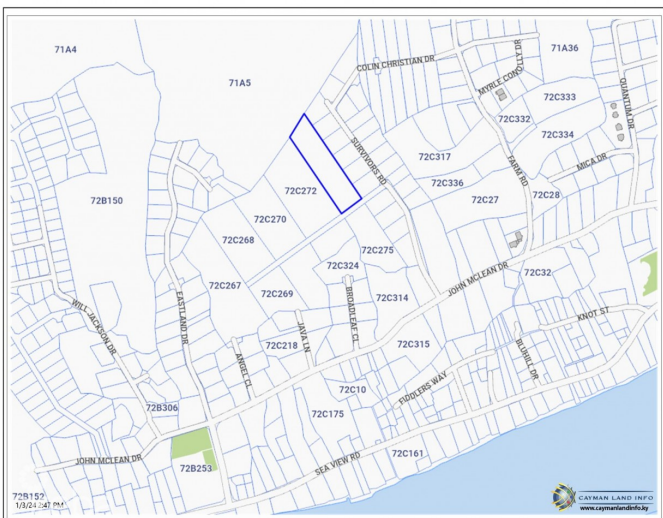
DESCRIPTION

Residential developable land north of John McLean Drive generally 5ft above sea level. Suitable for subdivision into seven house lots or 36 apartments

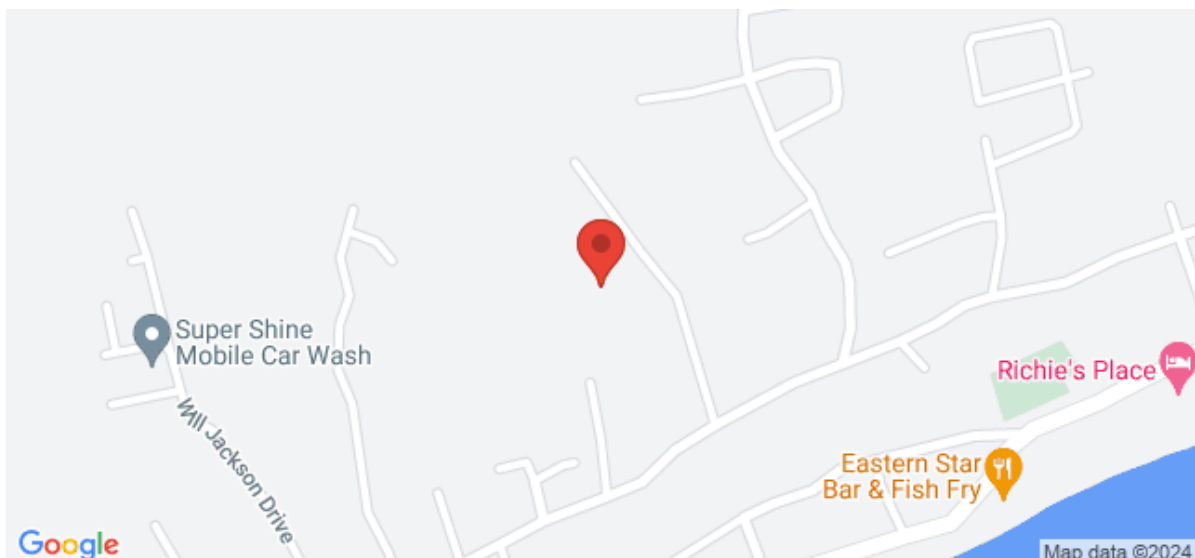
FEATURES

Zoning: Medium Density Residential

IMAGES



MAP



CIREBA MLS LDX feed courtesy of CAYMAN ISLANDS PROPERTIES

***Disclaimer:** The information contained herein has been furnished by the owner(s) and or their nominee and represented by them to be accurate. The listing company, agent and CIREBA MLS disclaims any liability or responsibility for any inaccuracies, errors or omissions in the represented information. The listing details herein are also courtesy of CIREBA (Cayman Islands Real Estate Brokers Association) MLS and/or via LDX (Listing Data Exchange) feed. All the information contained herein is subject to errors, omissions, price changes, prior sale or withdrawal, without notice and is at all times subject to verification by the purchaser(s).