

3.235-ACRE DEVELOPMENT PARCEL WITH OPERATIONAL FARM (MLS#: 420980)

DETAILS

Price: CI\$1,575,000	MLS#: 420980	Type: Land	Status: Active
Block: 43E	Parcel: 451		
Width: 397.00	Depth: 350.00		
Acres: 3.24			

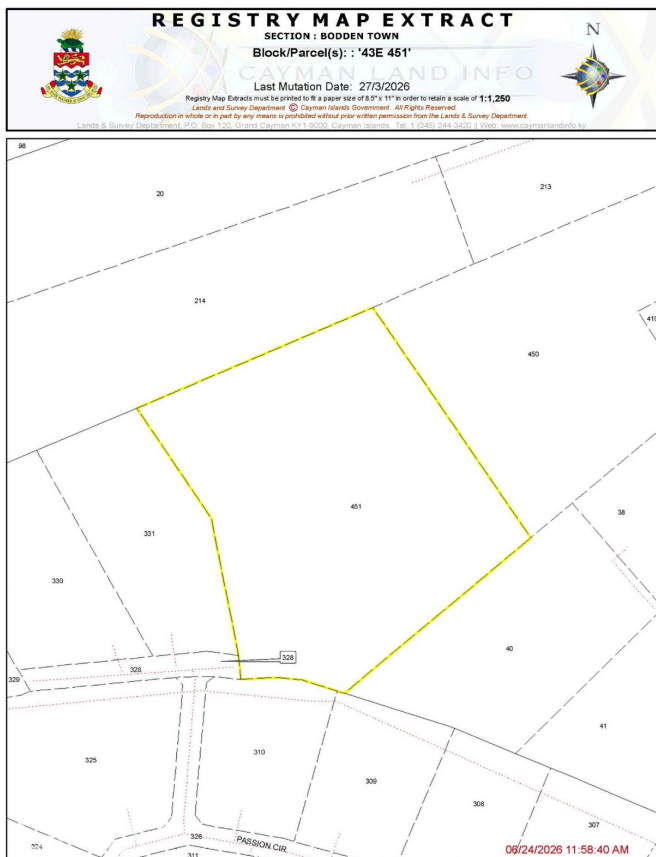
DESCRIPTION

Excellent opportunity for residential or agricultural development, with the added benefit of a fully operational, income-generating egg farm already in place. Zoned Agriculture/Residential, the property offers flexibility for a buyer looking to subdivide, build out, or hold for future development. The land is partially treed and includes registered road access. Well-positioned to benefit from the planned East-West Arterial expansion (Phases 2 & 3), which will significantly improve connectivity to George Town and the wider island. A rare opportunity to secure a significant parcel in a rapidly evolving corridor with a fully operational farm as an added advantage.

FEATURES

Zoning: Agriculture/Residential

IMAGES





CIREBA MLS LDX feed courtesy of KELLER WILLIAMS

***Disclaimer:** The information contained herein has been furnished by the owner(s) and or their nominee and represented by them to be accurate. The listing company, agent and CIREBA MLS disclaims any liability or responsibility for any inaccuracies, errors or omissions in the represented information. The listing details herein are also courtesy of CIREBA (Cayman Islands Real Estate Brokers Association) MLS and/or via LDX (Listing Data Exchange) feed. All the information contained herein is subject to errors, omissions, price changes, prior sale or withdrawal, without notice and is at all times subject to verification by the purchaser(s).