

---

## **PRIME BUILDING LOT ON PERIWINKLE DRIVE, CHERRY TREE ESTATES (MLS#: 420826)**

### DETAILS

---

Price: CI\$150,000	MLS#: 420826	Type: Land	Status: Active
Block: 48C	Parcel: 157		
Width: 100.00	Depth: 125.00		
Acres: 0.29			

### DESCRIPTION

---

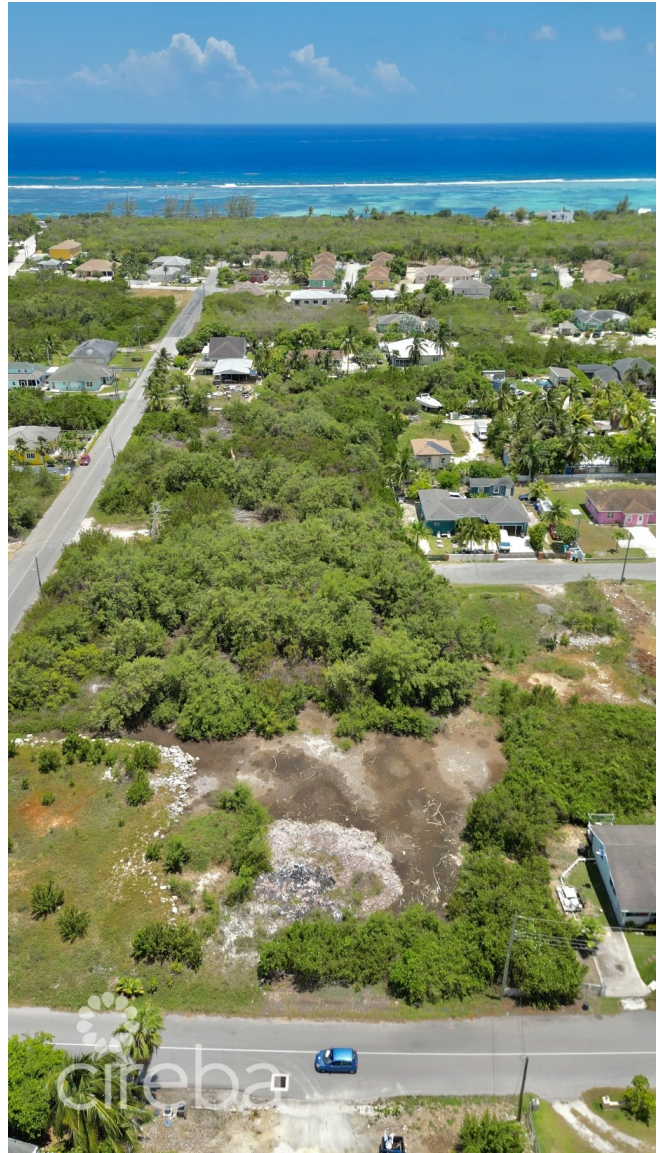
This beautiful 0.29-acre lot offers a rare opportunity to build your dream home in one of Grand Cayman's most desirable residential areas. Nestled in Cherry Tree Estates, the property sits midway between the scenic shores of Pease Bay and Breakers, placing you just minutes from tranquil beaches and stunning coastline. Located close to Savannah where you'll enjoy convenient access to shopping, dining, and everyday amenities, while remaining close to some of Cayman's best nature trails and waterfront restaurants in East End and Rum Point. The lot is partially filled and elevated 3 feet above sea level, with existing vegetation and mature trees that provide natural privacy and charm. Utilities are readily available, meaning your project can move forward quickly and smoothly. With easy beach access nearby, this is the perfect setting for a relaxed island lifestyle. Ready for your vision — whether it's a modern family home, a vacation retreat, or a smart investment, this Periwinkle Drive lot is an excellent opportunity in a fast-growing, sought-after community.

### FEATURES

---

Zoning: Low Density residential

IMAGES





---

CIREBA MLS LDX feed courtesy of SHORELINE PROPERTIES CAYMAN ISLANDS

**\*Disclaimer:** The information contained herein has been furnished by the owner(s) and or their nominee and represented by them to be accurate. The listing company, agent and CIREBA MLS disclaims any liability or responsibility for any inaccuracies, errors or omissions in the represented information. The listing details herein are also courtesy of CIREBA (Cayman Islands Real Estate Brokers Association) MLS and/or via LDX (Listing Data Exchange) feed. All the information contained herein is subject to errors, omissions, price changes, prior sale or withdrawal, without notice and is at all times subject to verification by the purchaser(s).