

## PRIME LOCATION CANAL FRONT HARBOUR REACH (MLS#: 419227)

### DETAILS

Price: CI\$539,000  
Block: 22E  
Width: 95.00  
Acres: 0.26

MLS#: 419227  
Parcel: 503A  
Depth: 135.00

Type: Land

Status: Active

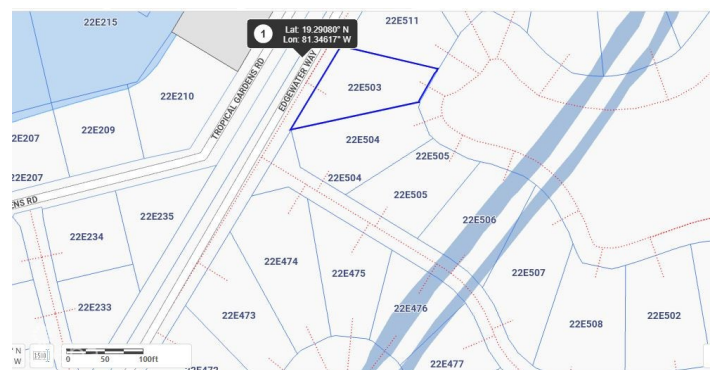
### DESCRIPTION

Prime location, in a sought-after community on the canal, in a serene environment, sounds like paradise & It Is paradise. Canal view house lot in the prestigious Harbour Reach community in Grand Harbour. Harbour Reach is Canal lot community with direct access to the North Sound with a cantilevered 40 foot dock, this and these lots are all filled with compacted aggregate and safety retained by a keystone seawall which means there is no need for the added expense of pilings. Harbour Reach offers a 24-7 manned gatehouse with strong covenants to ensure high standards and quality upliftment of this beautifully landscaped community conveniently located within walking distance of Harbour Walk complex & Grand Harbour Shopping Complex with restaurants, café, Hurleys supermarket. Cash purchase preferred.

### FEATURES

Zoning: Low Density residential

### IMAGES





---

CIREBA MLS LDX feed courtesy of TRIDENT PROPERTIES (CAYMAN ISLANDS) LTD

**\*Disclaimer:** The information contained herein has been furnished by the owner(s) and or their nominee and represented by them to be accurate. The listing company, agent and CIREBA MLS disclaims any liability or responsibility for any inaccuracies, errors or omissions in the represented information. The listing details herein are also courtesy of CIREBA (Cayman Islands Real Estate Brokers Association) MLS and/or via LDX (Listing Data Exchange) feed. All the information contained herein is subject to errors, omissions, price changes, prior sale or withdrawal, without notice and is at all times subject to verification by the purchaser(s).