

---

## GEORGETOWN SELF CONTAINED PARKING LOT (MLS#: 420705)

### DETAILS

---

Price: CI\$1,500,000

MLS#: 420705

Type: Land

Status: Active

Block: 14D

Parcel: 442

Width: 250.00

Depth: 80.00

Acres: 0.47

### DESCRIPTION

---

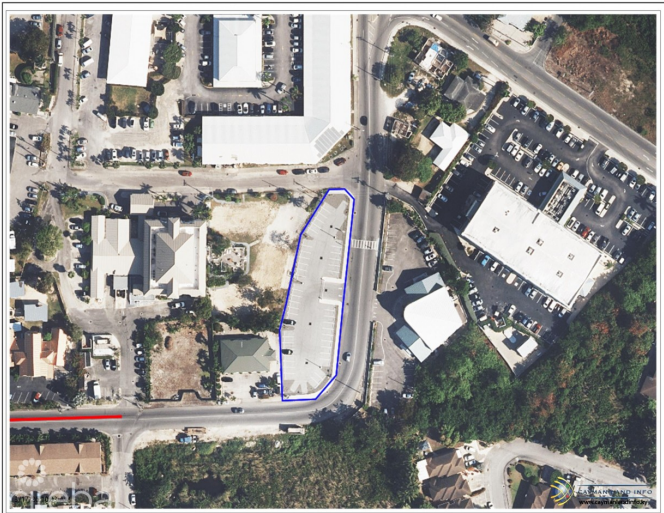
All road frontage site was deduced and filled to grade then paved with asphalt, sidewalks and parking stops. 50 designated parking spots, control gates and security lighting.

### FEATURES

---

### IMAGES

---



### MAP

---



---

CIREBA MLS LDX feed courtesy of RAINBOW REALTY LTD.

**\*Disclaimer:** The information contained herein has been furnished by the owner(s) and or their nominee and represented by them to be accurate. The listing company, agent and CIREBA MLS disclaims any liability or responsibility for any inaccuracies, errors or omissions in the represented information. The listing details herein are also courtesy of CIREBA (Cayman Islands Real Estate Brokers Association) MLS and/or via LDX (Listing Data Exchange) feed. All the information contained herein is subject to errors, omissions, price changes, prior sale or withdrawal, without notice and is at all times subject to verification by the purchaser(s).