

## CORAL COURTS SUBDIVISION - FARM ROAD EAST END (MLS#: 420607)

### DETAILS

Price: CI\$150,120  
Block: 71A  
Width: 104.00  
Acres: 0.29

MLS#: 420607  
Parcel: 220  
Depth: 114.00

Type: Land

Status: Active

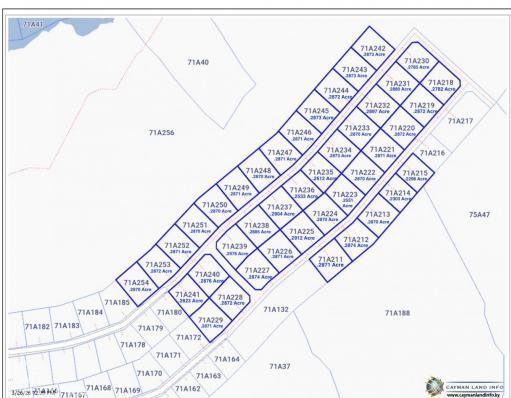
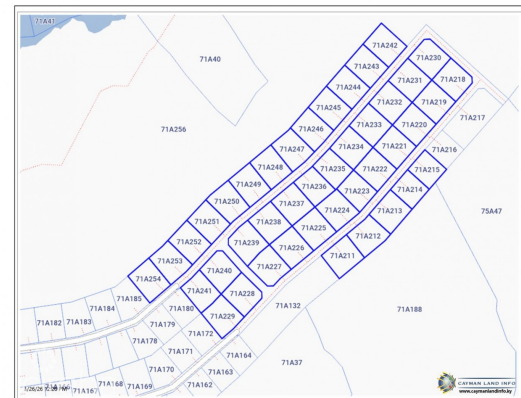
### DESCRIPTION

Consider investing in this spacious lot, whether it's for your family's future home with ample space for a garden, or for building a duplex as an investment. The neighborhood is healthful, peaceful, and well-established.

### FEATURES

Zoning: Low Density residential

### IMAGES





---

**CIREBA MLS LDX feed courtesy of ERA CAYMAN ISLANDS**

**\*Disclaimer:** The information contained herein has been furnished by the owner(s) and or their nominee and represented by them to be accurate. The listing company, agent and CIREBA MLS disclaims any liability or responsibility for any inaccuracies, errors or omissions in the represented information. The listing details herein are also courtesy of CIREBA (Cayman Islands Real Estate Brokers Association) MLS and/or via LDX (Listing Data Exchange) feed. All the information contained herein is subject to errors, omissions, price changes, prior sale or withdrawal, without notice and is at all times subject to verification by the purchaser(s).