

EXPANSIVE 0.89 ACRE MEDIUM DENSITY SITE WITH SEA VIEWS | BODDEN TOWN (MLS#: 420585)

DETAILS

Price: CI\$625,000

MLS#: 420585

Type: Land

Status: Active

Block: 44B

Parcel: 396L

Width: 155.00

Depth: 301.00

Acres: 0.89

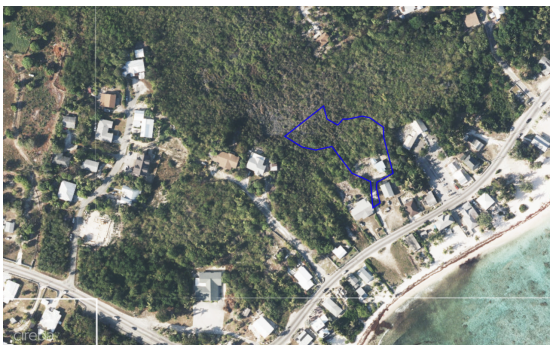
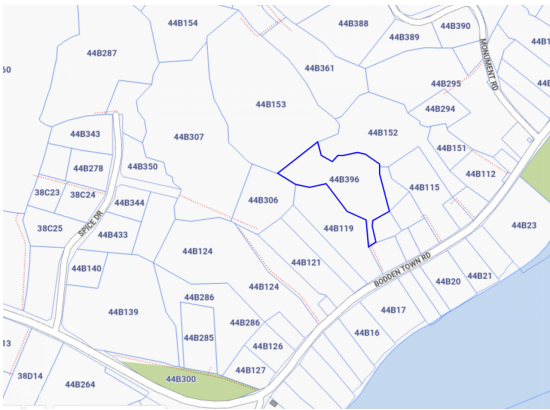
DESCRIPTION

Located in the heart of Bodden Town, this expansive 0.89-acre parcel presents an exceptional opportunity for redevelopment or investment. Elevated approximately 15 feet above sea level, the property benefits from a desirable position with attractive ocean views across the road. The irregular-shaped lot offers ample space and flexibility for a variety of development concepts, whether residential or multi-unit, subject to planning approvals. Zoned for medium-density residential use, the site is well-suited for those looking to maximize its potential in a growing and sought-after area. An existing 2-bedroom, 1-bathroom concrete cottage of approximately 750 square feet sits on the property. While habitable, the structure is best viewed as an interim use or as part of a broader redevelopment vision. With its generous size, elevated setting, and proximity to the ocean, this property represents a rare opportunity to secure a versatile development site in Bodden Town.

FEATURES

Zoning: Medium Density Residential

IMAGES





CIREBA MLS LDX feed courtesy of 1503 PROPERTY GROUP LTD

***Disclaimer:** The information contained herein has been furnished by the owner(s) and or their nominee and represented by them to be accurate. The listing company, agent and CIREBA MLS disclaims any liability or responsibility for any inaccuracies, errors or omissions in the represented information. The listing details herein are also courtesy of CIREBA (Cayman Islands Real Estate Brokers Association) MLS and/or via LDX (Listing Data Exchange) feed. All the information contained herein is subject to errors, omissions, price changes, prior sale or withdrawal, without notice and is at all times subject to verification by the purchaser(s).