
4-ACRE HIGH DENSITY LAND PARCEL OFF ESTERLY TIBBETTS HWY (MLS#: 420348)

DETAILS

Price: US\$3,850,000	MLS#: 420348	Type: Land	Status: Active
Block: 13B	Parcel: 198		
Width: 620.00	Depth: 875.00		
Acres: 4.08			

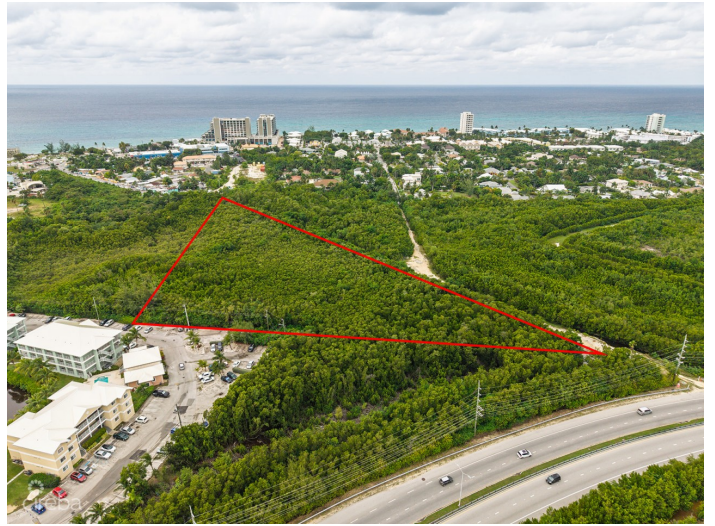
DESCRIPTION

Prime High-Density Development Site - Esterley Tibbetts Hwy | Camana Bay Corridor An exceptional opportunity to acquire a strategically positioned 4.076-acre development parcel in one of Grand Cayman's most sought-after and fastest-growing commercial and residential corridors. Located just off Esterley Tibbetts Highway, on the Camana Bay side of Lakeside, this site offers scale, zoning, and irreplaceable centrality - making it ideally suited for high-density residential, mixed-use, or multi-story development. This is a location-driven opportunity where accessibility, visibility, and surrounding infrastructure significantly enhance long-term value and development potential. Positioned across from Health City at Camana Bay, the property benefits from immediate proximity to one of the island's premier medical and wellness campuses, driving consistent demand for residential, short- and long-term accommodation, and professional housing. The site sits at the crossroads of Grand Cayman's most active growth zone, with seamless connectivity to Camana Bay, Cayman International School, Seven Mile Beach, George Town, and the wider West Bay Road corridor. Zoned High Density Residential, this parcel provides exceptional flexibility for developers targeting multi-story condominium projects, apartment communities, townhome de.....complete details on website.

FEATURES

Zoning: High Density Residential

IMAGES





CIREBA MLS LDX feed courtesy of THE AGENCY REAL ESTATE

***Disclaimer:** The information contained herein has been furnished by the owner(s) and or their nominee and represented by them to be accurate. The listing company, agent and CIREBA MLS disclaims any liability or responsibility for any inaccuracies, errors or omissions in the represented information. The listing details herein are also courtesy of CIREBA (Cayman Islands Real Estate Brokers Association) MLS and/or via LDX (Listing Data Exchange) feed. All the information contained herein is subject to errors, omissions, price changes, prior sale or withdrawal, without notice and is at all times subject to verification by the purchaser(s).