
BRAC BLUFF LAND 18.8 ACRES-PRIME INVESTMENT PROPERTY (MLS#: 420482)

DETAILS

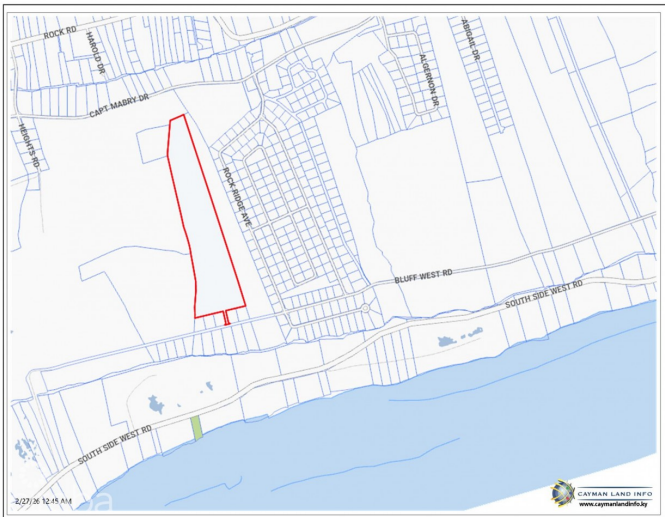
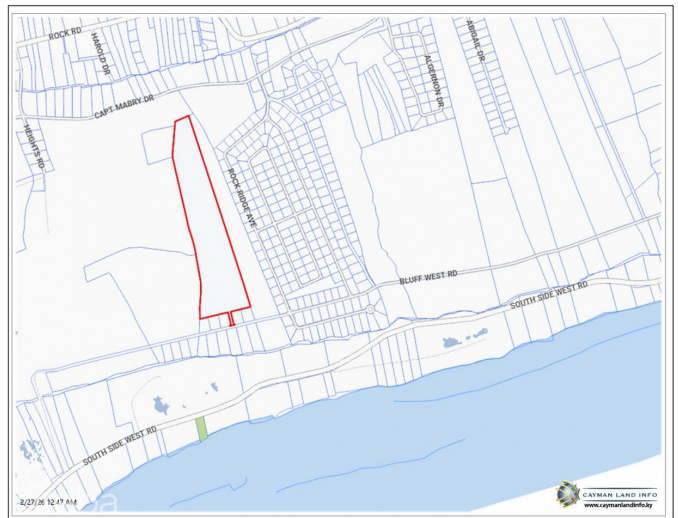
Price: CI\$1,400,000	MLS#: 420482	Type: Land	Status: Active
Block: 96D	Parcel: 70		
Width: 584.00	Depth: 2,200.00		
Acres: 18.80			

DESCRIPTION

PRICED TO SELL! Exceptional 18.8-acre development parcel located on the sought-after Bluff in Cayman Brac. Unlike many large parcels in this area, this property is not landlocked and benefits from direct right-of-way access from Bluff West Road on the south side, offering convenient entry and reduced development costs. This versatile tract is ideal for: Subdivision development Residential homes or apartment buildings Agricultural use or farmland Long-term land banking investment The elevation of the Bluff makes it one of Cayman Brac's most desirable areas, offering cooling breezes, expansive views, and strong development potential. Cayman Brac continues to show steady growth in its real estate market. The island offers: *Reliable utilities and telecommunications *Well-maintained road network *Airport with regular connections to Grand Cayman *Established schools and healthcare facilities *World-class diving, hiking trails, caves, and natural attractions Now is an excellent time to secure acreage in a growing market with strong future upside.

FEATURES

IMAGES





CIREBA MLS LDX feed courtesy of ENGEL & VOLKERS

***Disclaimer:** The information contained herein has been furnished by the owner(s) and or their nominee and represented by them to be accurate. The listing company, agent and CIREBA MLS disclaims any liability or responsibility for any inaccuracies, errors or omissions in the represented information. The listing details herein are also courtesy of CIREBA (Cayman Islands Real Estate Brokers Association) MLS and/or via LDX (Listing Data Exchange) feed. All the information contained herein is subject to errors, omissions, price changes, prior sale or withdrawal, without notice and is at all times subject to verification by the purchaser(s).