

PRIME EAST END 0.23 ACRE MEDIUM DENSITY LOT NEAR EAST END PRIMARY SCHOOL (MLS#: 420466)

DETAILS

Price: CI\$125,000	MLS#: 420466	Type: Land	Status: Active
Block: 72B	Parcel: 232		
Width: 85.00	Depth: 136.00		
Acres: 0.23			

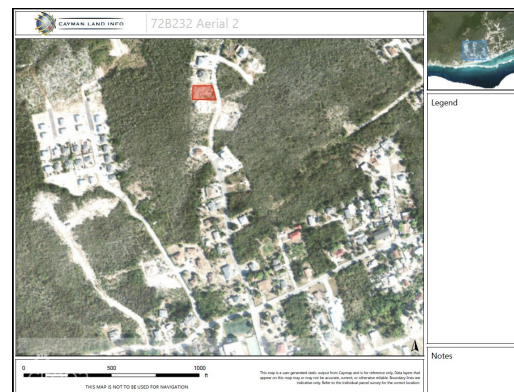
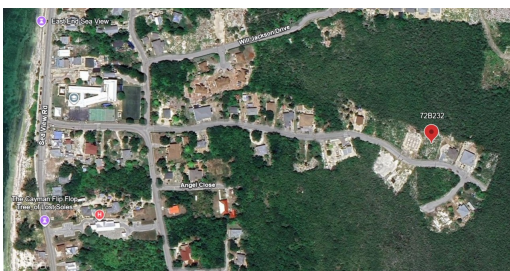
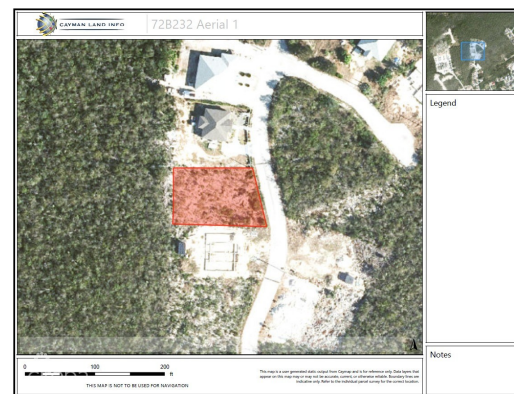
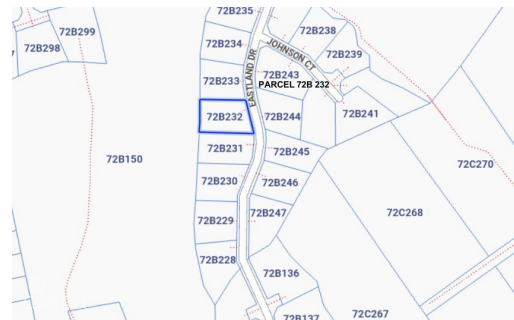
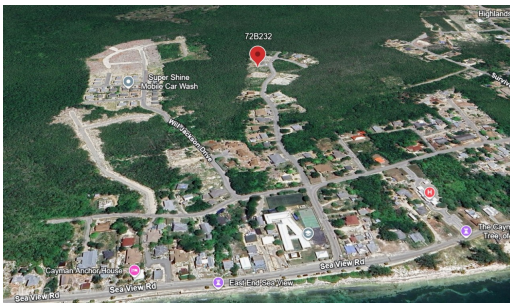
DESCRIPTION

This 0.2319-acre (10,101 sq ft) medium density residential lot is ideally located in East End, just minutes from East End Primary School and surrounding community amenities. Offering excellent development potential, the medium density zoning allows for duplex or multi-unit residential construction (subject to planning approval), making it an attractive opportunity for builders, investors, or first-time homeowners looking to develop in a growing area. The parcel is level and well-proportioned, providing flexibility in design and layout. Located in a quiet residential pocket, yet within convenient access to schools, shops, and the main East End roadway. East End continues to see steady demand for affordable residential development, making this a smart long-term investment or build-ready opportunity. Contact today for further details or to arrange a site visit.

FEATURES

Zoning: Medium Density Residential

IMAGES





CIREBA MLS LDX feed courtesy of CORCORAN CAYMAN ISLANDS

***Disclaimer:** The information contained herein has been furnished by the owner(s) and or their nominee and represented by them to be accurate. The listing company, agent and CIREBA MLS disclaims any liability or responsibility for any inaccuracies, errors or omissions in the represented information. The listing details herein are also courtesy of CIREBA (Cayman Islands Real Estate Brokers Association) MLS and/or via LDX (Listing Data Exchange) feed. All the information contained herein is subject to errors, omissions, price changes, prior sale or withdrawal, without notice and is at all times subject to verification by the purchaser(s).