

## SOUTHSIDE EAST SANDY SEAFRONT LOT (MLS#: 420455)

### DETAILS

Price: US\$225,000  
Block: 110A  
Width: 100.00  
Acres: 0.56

MLS#: 420455  
Parcel: 416  
Depth: 248.00

Type: Land

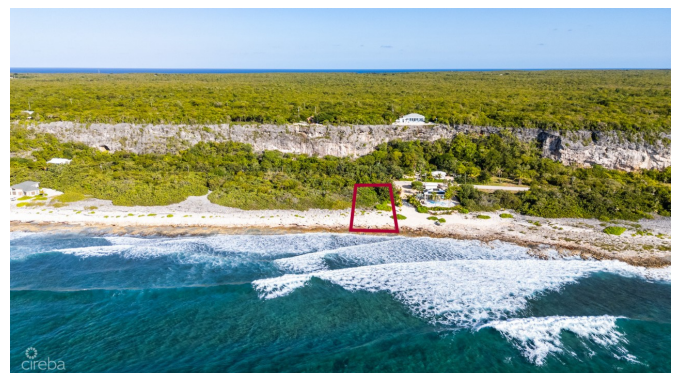
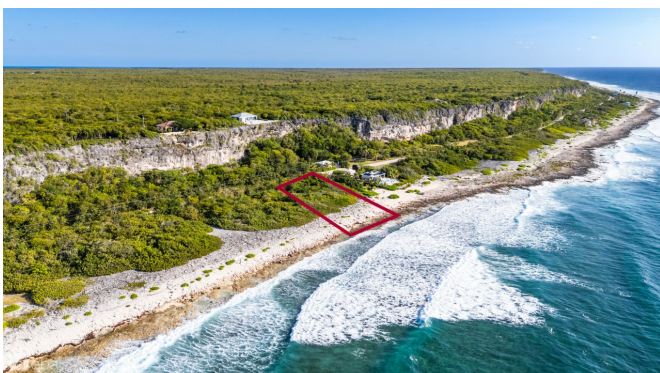
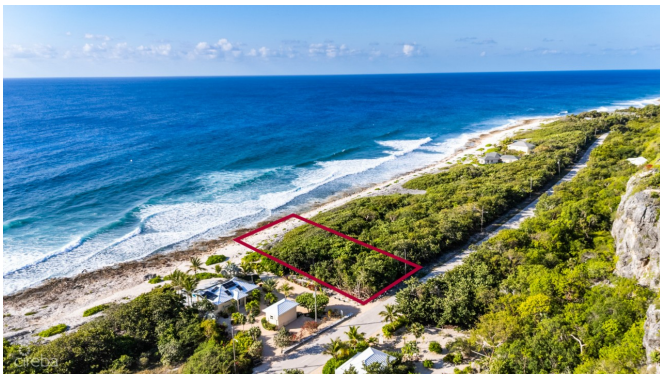
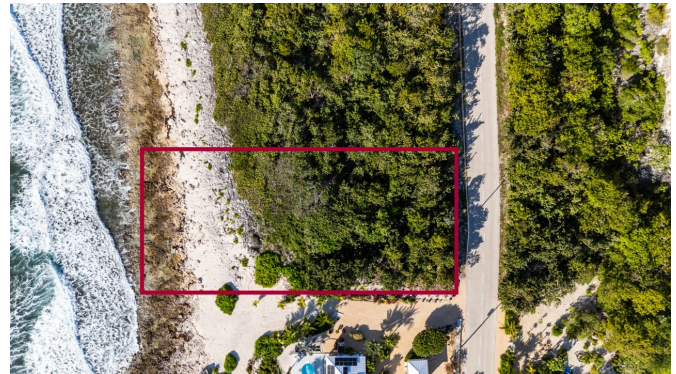
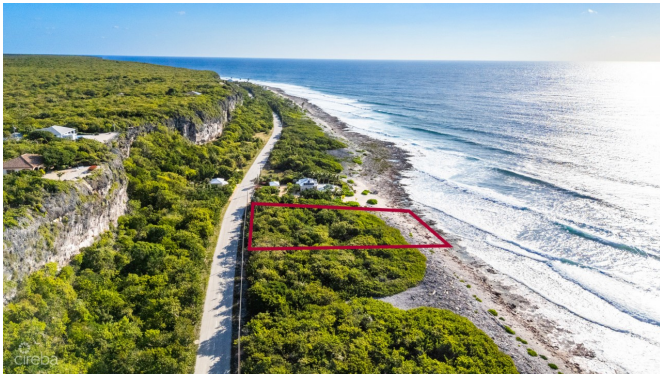
Status: Active

### DESCRIPTION

Imagine stepping onto 100 feet of seafront on Cayman Brac's peaceful South Side East —a rare stretch where the shoreline feels wide, natural, and unspoiled and the Bluff provides a stunning backdrop. This 0.56-acre parcel is ready for development, with generous frontage and loads of sand creating an inviting setting for a future coastal build. This lot offers flexibility for a range of concept, from a private island-style retreat to a thoughtfully designed residence that captures sea views and cooling breezes. With the water just steps away, you can plan outdoor spaces that make the most of the setting: shaded seating, a seaside deck, or a landscaped path down to the shoreline. The calm, idyllic feel of this area makes it easy to picture quiet mornings by the water and evenings under open skies. If you've been searching for a true seafront homesite on Cayman Brac this property deserves your attention.

### FEATURES

### IMAGES





---

CIREBA MLS LDX feed courtesy of BERKSHIRE HATHAWAY HOMESERVICES CAYMAN ISLANDS

**\*Disclaimer:** The information contained herein has been furnished by the owner(s) and or their nominee and represented by them to be accurate. The listing company, agent and CIREBA MLS disclaims any liability or responsibility for any inaccuracies, errors or omissions in the represented information. The listing details herein are also courtesy of CIREBA (Cayman Islands Real Estate Brokers Association) MLS and/or via LDX (Listing Data Exchange) feed. All the information contained herein is subject to errors, omissions, price changes, prior sale or withdrawal, without notice and is at all times subject to verification by the purchaser(s).