

PRIME WEST END CAYMAN BRAC LAND PARCEL 101 (MLS#: 420435)

DETAILS

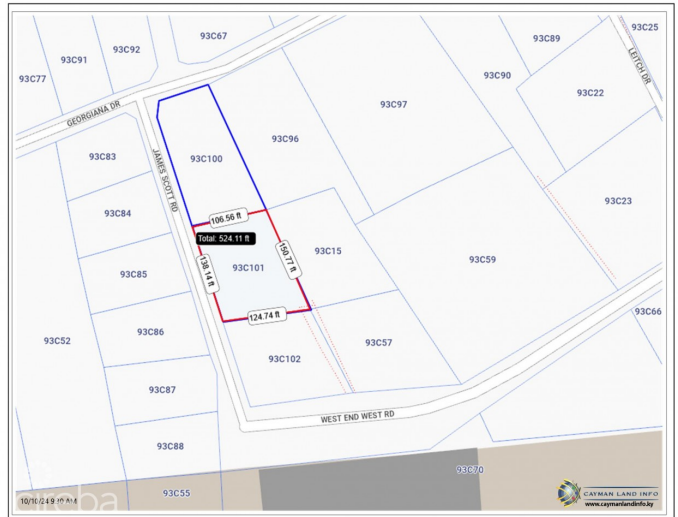
Price: CI\$98,000	MLS#: 420435	Type: Land	Status: Active
Block: 93C	Parcel: 101		
Width: 138.00	Depth: 107.00		
Acres: 0.37			

DESCRIPTION

Prime West end land in a prestigious neighbourhood right across the street from oceanfront lots and a public right of way access to the beach. Prime land for a beautiful vacation or rental home with fabulous snorkeling a two minute walk down the street in a designated Marine Park. Walking distance to all the shops, restaurants, airport and amenities in the West End of Cayman Brac. Build your dream home with Stamp Duty waivers available for development and no Zoning in Cayman Brac.

FEATURES

IMAGES





CIREBA MLS LDX feed courtesy of RAINBOW REALTY LTD.

***Disclaimer:** The information contained herein has been furnished by the owner(s) and or their nominee and represented by them to be accurate. The listing company, agent and CIREBA MLS disclaims any liability or responsibility for any inaccuracies, errors or omissions in the represented information. The listing details herein are also courtesy of CIREBA (Cayman Islands Real Estate Brokers Association) MLS and/or via LDX (Listing Data Exchange) feed. All the information contained herein is subject to errors, omissions, price changes, prior sale or withdrawal, without notice and is at all times subject to verification by the purchaser(s).