

## 6.50 ACRES - INVESTMENT OPPORTUNITY (MLS#: 418628)

### DETAILS

Price: CI\$1,900,000

MLS#: 418628

Type: Land

Status: Active

Block: 72B

Parcel: 75

Width: 580.00

Depth: 780.00

Acres: 6.50

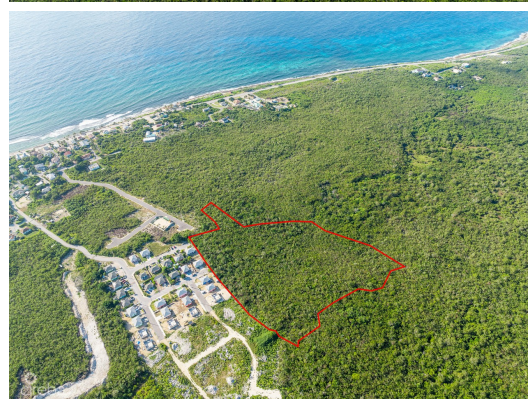
### DESCRIPTION

**6.50 ACRES - INVESTMENT OPPORTUNITY** This 6.5-acre parcel, zoned low-density residential, offers incredible potential for developers. With space to subdivide into approximately 25 house lots, each 10,000 sq. ft., or 90 apartments. This property is perfect for creating a desirable community. Strategically located, it's an ideal investment for those seeking to maximize returns while meeting the growing demand for spacious, residential lots. Don't miss your chance to turn this prime land into a lucrative development. Contact me today for more info!

### FEATURES

Zoning: Low Density residential

### IMAGES





---

CIREBA MLS LDX feed courtesy of CENTURY 21 THOMPSON REALTY

**\*Disclaimer:** The information contained herein has been furnished by the owner(s) and or their nominee and represented by them to be accurate. The listing company, agent and CIREBA MLS disclaims any liability or responsibility for any inaccuracies, errors or omissions in the represented information. The listing details herein are also courtesy of CIREBA (Cayman Islands Real Estate Brokers Association) MLS and/or via LDX (Listing Data Exchange) feed. All the information contained herein is subject to errors, omissions, price changes, prior sale or withdrawal, without notice and is at all times subject to verification by the purchaser(s).