
DOLPHIN ESTATE PARCEL, CAYMAN BRAC (MLS#: 420301)

DETAILS

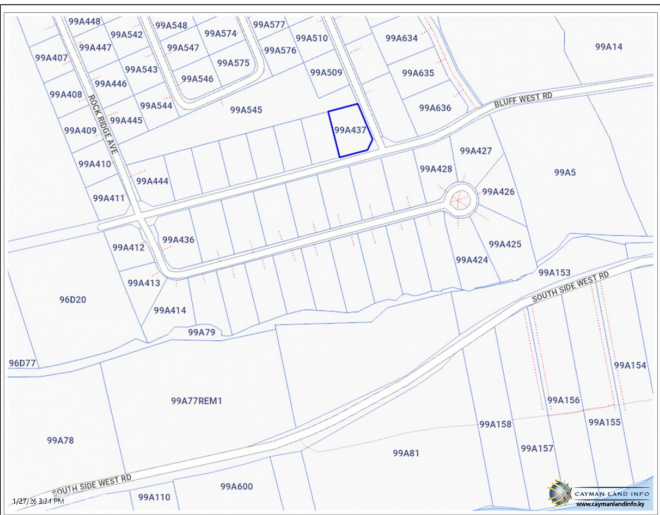
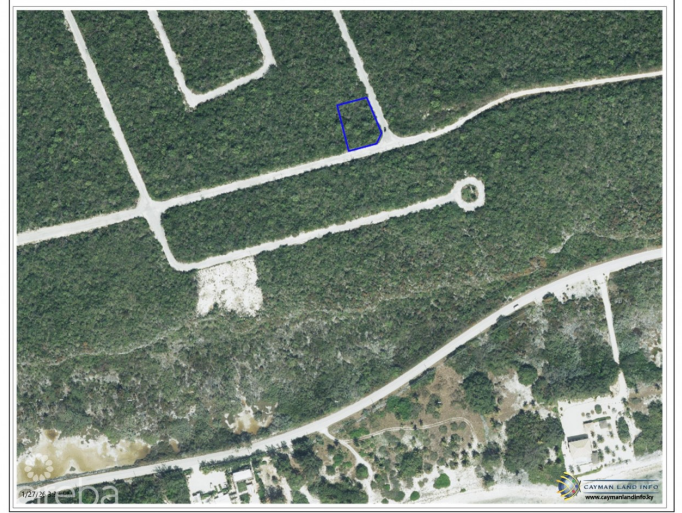
Price: US\$59,000	MLS#: 420301	Type: Land	Status: Active
Block: 99A	Parcel: 437		
Width: 85.06	Depth: 127.96		
Acres: 0.28			

DESCRIPTION

A Thoughtful Opportunity to Build in Cayman Brac Dolphin Estate Parcel presents a rare opportunity to own prime land for sale in Cayman Brac, thoughtfully positioned at inland development known for its natural beauty and accessibility. Spanning 0.2776 acres, this parcel offers ample space to design a residence or income-producing property that aligns with your long-term vision—whether that’s a private island retreat or a strategically located vacation rental. Situated high and dry, this inland lot provides peace of mind while remaining conveniently close to Cayman Brac’s most essential and desirable amenities. Land Designed for Possibility Set among lush tropical greenery, Dolphin Estate is divided into well-planned plots with asphalt road frontage, offering easy access. This Cayman Brac land parcel balances privacy with connectivity—an increasingly valuable combination for both personal use and investment-minded buyers seeking stability in the Caribbean real estate market. Property Highlights: • 0.2776-acre inland land parcel • High and dry terrain • Asphalt road frontage • Ideal for residential or vacation rental construction Connected to What Matters Location is key, and this Dolphin Estate Parcel delivers. The property is minutes from the Cayman Brac airport, enabling seamless travel and guest.....complete details on website.

FEATURES

IMAGES





CIREBA MLS LDX feed courtesy of WILLIAMS2 REAL ESTATE

***Disclaimer:** The information contained herein has been furnished by the owner(s) and or their nominee and represented by them to be accurate. The listing company, agent and CIREBA MLS disclaims any liability or responsibility for any inaccuracies, errors or omissions in the represented information. The listing details herein are also courtesy of CIREBA (Cayman Islands Real Estate Brokers Association) MLS and/or via LDX (Listing Data Exchange) feed. All the information contained herein is subject to errors, omissions, price changes, prior sale or withdrawal, without notice and is at all times subject to verification by the purchaser(s).