

BEACH FRONT EAST END LAND (MLS#: 418414)

DETAILS

Price: US\$950,000

MLS#: 418414

Type: Land

Status: Active

Block: 69A

Parcel: 139

Width: 100.00

Depth: 225.00

Acres: 0.50

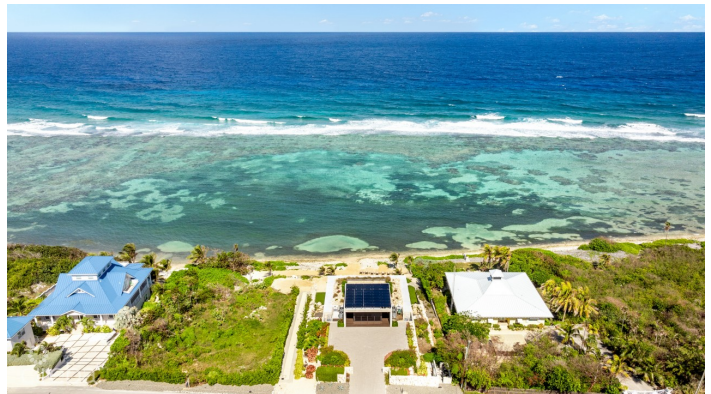
DESCRIPTION

Build your dream home on this elevated luxury beach-front site in the picturesque and peaceful East End. This site is rare with a unique gradient sloping down towards an amazing 100ft of white sand beach and unobstructed views of the turquoise Caribbean sea. Protected by a pristine coral reef, you have direct access to incredible snorkeling right from your own secluded beach. Between two beautiful homes and a short drive from many amenities and local attractions such as the Queen's Botanical Park, Starfish Point, Rum Point and Kaibo, your opportunity for unhindered paradise awaits.

FEATURES

Zoning: Low Density residential

IMAGES





CIREBA MLS LDX feed courtesy of TEN SAILS PROPERTY GROUP LTD

***Disclaimer:** The information contained herein has been furnished by the owner(s) and or their nominee and represented by them to be accurate. The listing company, agent and CIREBA MLS disclaims any liability or responsibility for any inaccuracies, errors or omissions in the represented information. The listing details herein are also courtesy of CIREBA (Cayman Islands Real Estate Brokers Association) MLS and/or via LDX (Listing Data Exchange) feed. All the information contained herein is subject to errors, omissions, price changes, prior sale or withdrawal, without notice and is at all times subject to verification by the purchaser(s).