
.38 ACRE - DUPLEX LOT (MLS#: 420117)**DETAILS**

| | | | |
|--------------------|---------------|------------|----------------|
| Price: CI\$297,000 | MLS#: 420117 | Type: Land | Status: Active |
| Block: 25C | Parcel: 203 | | |
| Width: 100.00 | Depth: 170.00 | | |
| Acres: 0.38 | | | |

DESCRIPTION

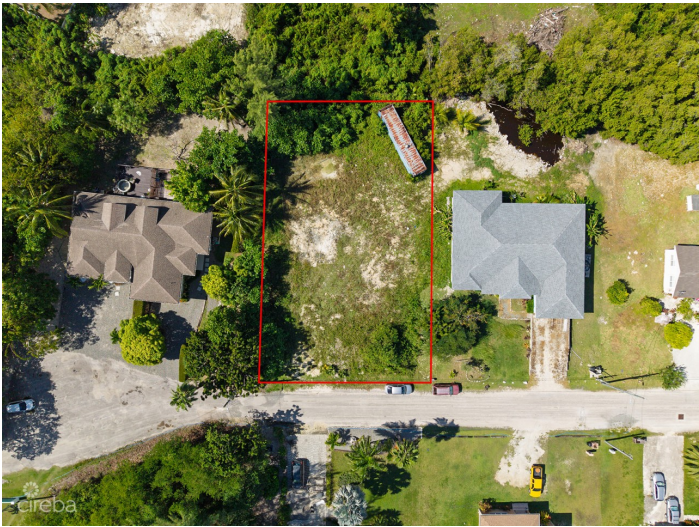
New to Market: Rare .38 Acre Duplex Lot in Spotts Newlands Located directly off the Spotts Newlands Bypass, with additional access via Rex Creighton Boulevard, this spacious .38-acre parcel offers exceptional convenience and strong potential for both homeowners and investors. Secure this ready-to-build lot. Whether you're planning your dream home, developing an income-producing duplex, or securing land for future investment, this property stands out in a rapidly growing area. Property Highlights:

- Prime Spotts Newlands Bypass location
- Dual access points for added flexibility
- Ideal for a duplex build
- Generous .38-acre lot
- Ready for immediate development
- Strong long-term value with consistent demand
- Suitable for first-time Caymanian buyers and investors

Calling all first-time Caymanian buyers looking to build and create long-term equity. Investors seeking a prepared, high-potential parcel will also appreciate the opportunity this property offers.

FEATURES

Zoning: Low Density residential





CIREBA MLS LDX feed courtesy of CENTURY 21 THOMPSON REALTY

***Disclaimer:** The information contained herein has been furnished by the owner(s) and or their nominee and represented by them to be accurate. The listing company, agent and CIREBA MLS disclaims any liability or responsibility for any inaccuracies, errors or omissions in the represented information. The listing details herein are also courtesy of CIREBA (Cayman Islands Real Estate Brokers Association) MLS and/or via LDX (Listing Data Exchange) feed. All the information contained herein is subject to errors, omissions, price changes, prior sale or withdrawal, without notice and is at all times subject to verification by the purchaser(s).