

1.14 ACRES OF EAST END LAND (MLS#: 420121)

DETAILS

Price: CI\$275,000
Block: 72C
Width: 213.00
Acres: 1.14

MLS#: 420121
Parcel: 269
Depth: 298.00

Type: Land

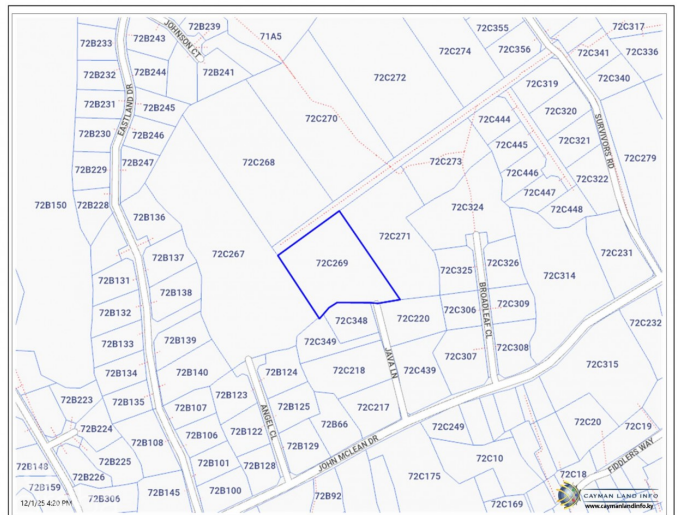
Status: Active

DESCRIPTION

Opportunity to own this spacious 1.14 acre inland parcel positioned in East End, the quieter side of the Island, north of John McLean Drive. Zoned medium density residential, this lot provides flexibility for residential development and has indigenous vegetation. Mapping by caymanlandinfo.ky

FEATURES

IMAGES



MAP



CIREBA MLS LDX feed courtesy of CAYMAN ISLANDS SOTHEBY'S INT'L REALTY

***Disclaimer:** The information contained herein has been furnished by the owner(s) and or their nominee and represented by them to be accurate. The listing company, agent and CIREBA MLS disclaims any liability or responsibility for any inaccuracies, errors or omissions in the represented information. The listing details herein are also courtesy of CIREBA (Cayman Islands Real Estate Brokers Association) MLS and/or via LDX (Listing Data Exchange) feed. All the information contained herein is subject to errors, omissions, price changes, prior sale or withdrawal, without notice and is at all times subject to verification by the purchaser(s).