

LARGE CORNER LOT .366 ACRE IN LOOKOUT GARDENS (MLS#: 419889)

DETAILS

Price: CI\$199,000
Block: 43E
Width: 122.00
Acres: 0.37

MLS#: 419889
Parcel: 130
Depth: 150.00

Type: Land

Status: Active

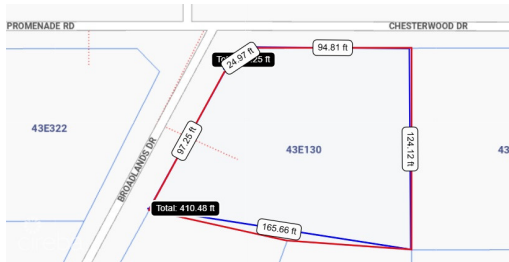
DESCRIPTION

Large corner lot (over 1/3 of an acre) in Lookout Gardens. The property was previously cleared so there is not much work to do to prep the site. The property is being offered slightly below market value for a quick sale. It is located on the corner of Broadlands and Chesterwood Dr. in Lookout Gardens. Feel free to drive by and take a look. Call today for more information.

FEATURES

Zoning: Low Density residential

IMAGES





CIREBA MLS LDX feed courtesy of 1503 PROPERTY GROUP LTD

***Disclaimer:** The information contained herein has been furnished by the owner(s) and or their nominee and represented by them to be accurate. The listing company, agent and CIREBA MLS disclaims any liability or responsibility for any inaccuracies, errors or omissions in the represented information. The listing details herein are also courtesy of CIREBA (Cayman Islands Real Estate Brokers Association) MLS and/or via LDX (Listing Data Exchange) feed. All the information contained herein is subject to errors, omissions, price changes, prior sale or withdrawal, without notice and is at all times subject to verification by the purchaser(s).