

## RITZ CARLTON DECK HOUSE #18 | CANAL FRONT LAND (MLS#: 419961)

### DETAILS

Price: US\$4,250,000	MLS#: 419961	Type: Land	Status: Active
Block: 12C	Parcel: 451/3H10H18		
Width: 155.00	Depth: 105.00		
Acres: 0.43			

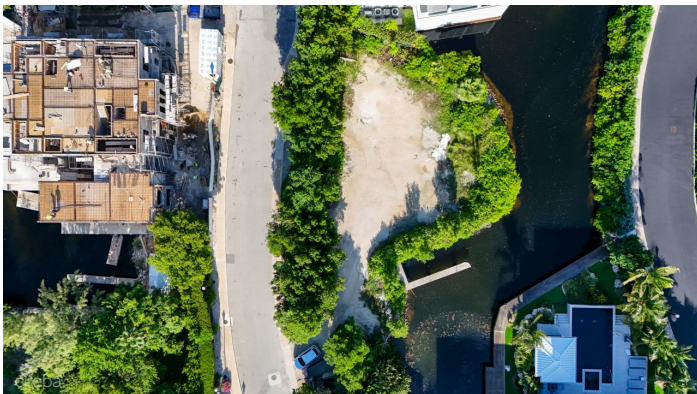
### DESCRIPTION

A rare opportunity to build your custom villa within one of Grand Cayman's most exclusive communities — The DeckHouses at The Ritz-Carlton. This 0.43-acre canalfront parcel offers serene views over Dragon Bay and the lush fairways of The Ritz-Carlton Golf Club, combining resort luxury with the privacy of an intimate, gated enclave. With direct canal frontage and a private dock, boating enthusiasts will enjoy effortless access to the North Sound and beyond. Owners benefit from all of The Ritz-Carlton's world-class amenities — including fine dining, spa and fitness facilities, tennis, golf, water sports, and beach access — alongside the dedicated services and security of a five-star resort. Architectural plans for a signature DeckHouse residence are available, offering the perfect foundation to design a home that reflects the harmony of refined coastal living and sophisticated resort style. Experience the best of Grand Cayman — where privacy, luxury, and lifestyle meet at The Ritz-Carlton DeckHouses.

### FEATURES

Zoning: Beach Resort/Residential

### IMAGES





---

CIREBA MLS LDX feed courtesy of 1503 PROPERTY GROUP LTD

**\*Disclaimer:** The information contained herein has been furnished by the owner(s) and or their nominee and represented by them to be accurate. The listing company, agent and CIREBA MLS disclaims any liability or responsibility for any inaccuracies, errors or omissions in the represented information. The listing details herein are also courtesy of CIREBA (Cayman Islands Real Estate Brokers Association) MLS and/or via LDX (Listing Data Exchange) feed. All the information contained herein is subject to errors, omissions, price changes, prior sale or withdrawal, without notice and is at all times subject to verification by the purchaser(s).