

1.35 ACRE NORTH SIDE LAND PARCEL (MLS#: 419787)

DETAILS

Price: CI\$475,000

MLS#: 419787

Type: Land

Status: Active

Block: 49C

Parcel: 67

Width: 354.00

Depth: 172.00

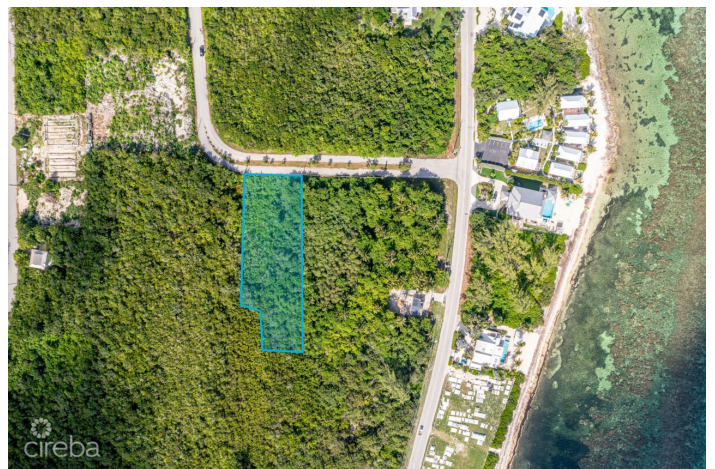
Acres: 1.35

DESCRIPTION

Positioned at the corner of Splendid View Boulevard and North Side Road, this 1.35-acre parcel offers a rare opportunity to create something exceptional in one of Grand Cayman's most tranquil districts. Just a short walk from the shoreline, the location blends natural beauty with convenience, offering easy access to local amenities, beaches, and the relaxed charm of the North Side community. With dual road frontage and generous acreage, the property is perfectly suited for a private estate, multi-residence development, or a boutique investment project. Its appeal lies not only in its scale but in the lifestyle it affords - peaceful coastal living paired with long-term growth potential. Opportunities of this size and position in North Side are truly rare.

FEATURES

IMAGES





CIREBA MLS LDX feed courtesy of PROVENANCE PROPERTIES OF CAYMAN LTD

***Disclaimer:** The information contained herein has been furnished by the owner(s) and or their nominee and represented by them to be accurate. The listing company, agent and CIREBA MLS disclaims any liability or responsibility for any inaccuracies, errors or omissions in the represented information. The listing details herein are also courtesy of CIREBA (Cayman Islands Real Estate Brokers Association) MLS and/or via LDX (Listing Data Exchange) feed. All the information contained herein is subject to errors, omissions, price changes, prior sale or withdrawal, without notice and is at all times subject to verification by the purchaser(s).