

CAYMAN BRAC LOGHOUSE DRIVE 2.74 ACRES (MLS#: 419632)

DETAILS

Price: CI\$199,000

MLS#: 419632

Type: Land

Status: Active

Block: 109A

Parcel: 143

Width: 230.00

Depth: 1,025.00

Acres: 2.74

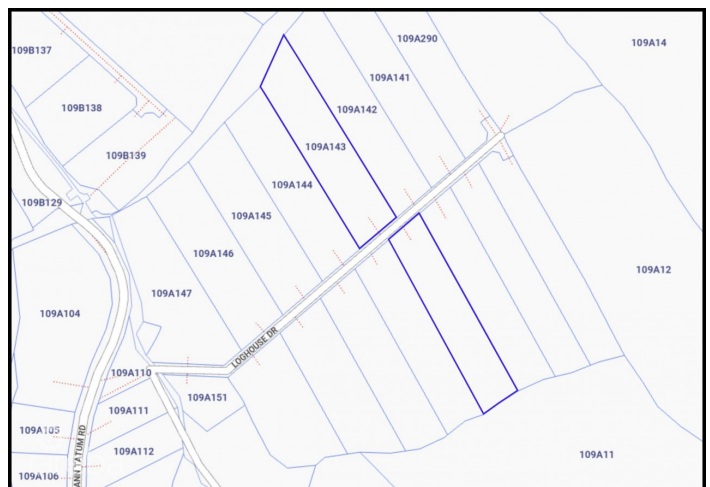
DESCRIPTION

Situated on the coveted Bluff Edge of Cayman Brac's peaceful Eastern side, this rare 2.74-acre parcel offers exceptional privacy and captivating beauty. Perched over 110 feet above sea level, the property commands breathtaking, uninterrupted views of the shimmering Caribbean Sea. Its elevated position captures cooling breezes and showcases some of the island's most spectacular sunsets. With its expansive size, seclusion, and sought-after Bluff Edge location, this is the perfect site for a private estate, luxury villa, or investment in one of the Cayman Islands' most dramatic landscapes.

FEATURES

Zoning: Agriculture/Residential

IMAGES





CIREBA MLS LDX feed courtesy of RAINBOW REALTY LTD.

***Disclaimer:** The information contained herein has been furnished by the owner(s) and or their nominee and represented by them to be accurate. The listing company, agent and CIREBA MLS disclaims any liability or responsibility for any inaccuracies, errors or omissions in the represented information. The listing details herein are also courtesy of CIREBA (Cayman Islands Real Estate Brokers Association) MLS and/or via LDX (Listing Data Exchange) feed. All the information contained herein is subject to errors, omissions, price changes, prior sale or withdrawal, without notice and is at all times subject to verification by the purchaser(s).