

## MAHOGANY HEIGHTS - LOT #6 (MLS#: 419627)

### DETAILS

Price: CI\$118,000  
Block: 72C  
Width: 92.00  
Acres: 0.20

MLS#: 419627  
Parcel: 27LOT6  
Depth: 92.00

Type: Land

Status: Active

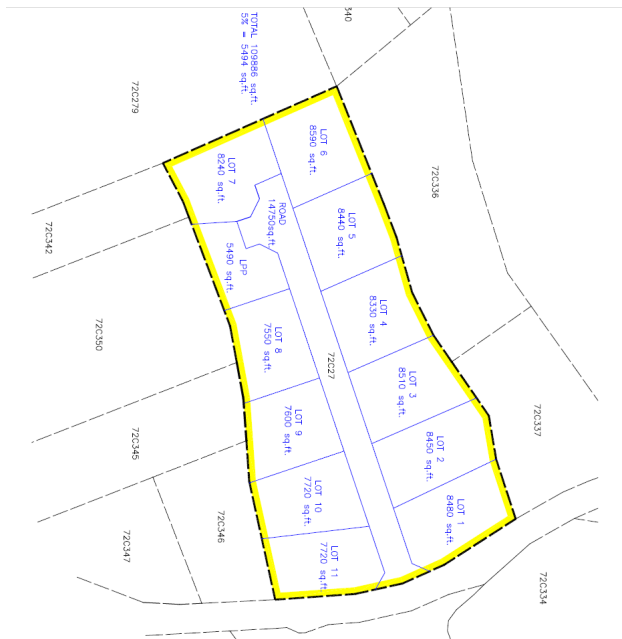
### DESCRIPTION

Seize this rare opportunity to own in Mahogany Heights, an exclusive 12-lot private subdivision perfectly positioned at the entrance of Farm Road, East End. This subdivision offers the ideal setting for your dream home or investment property, with medium-density zoning providing the flexibility you need. Enjoy the serenity of a private community. ~ Prime Location - Close to East End's stunning beaches, schools, and local conveniences. ~ New & Exclusive - Be among the first to invest in East End's hottest development. ~ Endless Potential and Incredible Value - Secure your spot now before prices rise. ~ Medium-Density Zoning - Offers flexibility for your dream home or an investment build. Don't wait — This lot won't last long. Claim your piece of paradise today!

### FEATURES

Zoning: Medium Density Residential

### IMAGES





---

CIREBA MLS LDX feed courtesy of CENTURY 21 THOMPSON REALTY

**\*Disclaimer:** The information contained herein has been furnished by the owner(s) and or their nominee and represented by them to be accurate. The listing company, agent and CIREBA MLS disclaims any liability or responsibility for any inaccuracies, errors or omissions in the represented information. The listing details herein are also courtesy of CIREBA (Cayman Islands Real Estate Brokers Association) MLS and/or via LDX (Listing Data Exchange) feed. All the information contained herein is subject to errors, omissions, price changes, prior sale or withdrawal, without notice and is at all times subject to verification by the purchaser(s).