

EAST END DEVELOPMENT LAND (MLS#: 418442)

DETAILS

Price: CI\$999,000

MLS#: 418442

Type: Land

Status: Active

Block: 75A

Parcel: 222

Width: 185.00

Depth: 1,850.00

Acres: 6.39

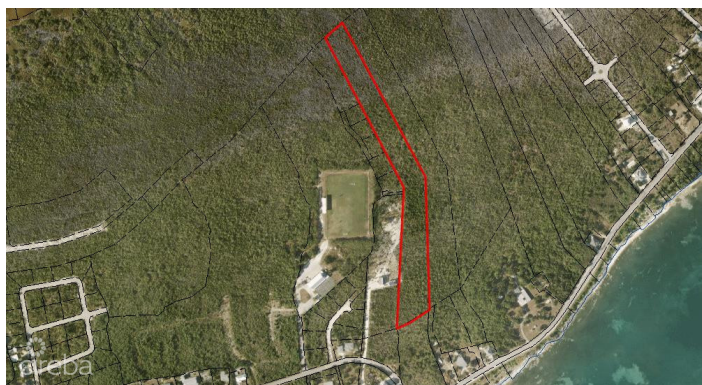
DESCRIPTION

Attractive for development, especially if combined with adjoining land. 30 ft wide access gazetted by Government under BP 675 runs from John McLean Drive to the west boundary

FEATURES

Zoning: Agriculture/Residential

IMAGES





CIREBA MLS LDX feed courtesy of CAYMAN ISLANDS PROPERTIES

***Disclaimer:** The information contained herein has been furnished by the owner(s) and or their nominee and represented by them to be accurate. The listing company, agent and CIREBA MLS disclaims any liability or responsibility for any inaccuracies, errors or omissions in the represented information. The listing details herein are also courtesy of CIREBA (Cayman Islands Real Estate Brokers Association) MLS and/or via LDX (Listing Data Exchange) feed. All the information contained herein is subject to errors, omissions, price changes, prior sale or withdrawal, without notice and is at all times subject to verification by the purchaser(s).