

## CAPTS JOE & OSBERT RD (MLS#: 418300)

### DETAILS

Price: CI\$300,000  
Block: 4C  
Width: 109.18  
Acres: 0.29

MLS#: 418300  
Parcel: 513  
Depth: 116.83

Type: Land

Status: Pending/Conditional

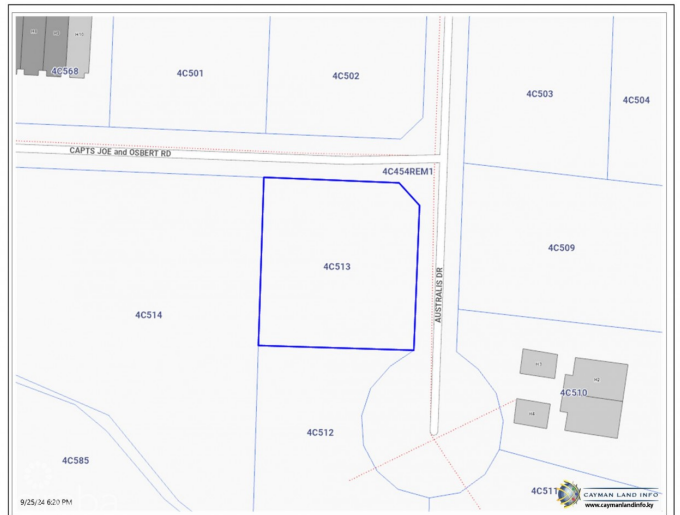
### DESCRIPTION

Seize the opportunity to build your dream home on this exceptional parcel of land in the desirable West Bay area! This spacious lot measures 0.2864 acres and is high and dry, making it perfectly suited for new construction. This is a rare chance to invest in a prime piece of real estate in the West Bay community.

### FEATURES

Zoning: Agriculture/Residential

### IMAGES



### MAP



---

CIREBA MLS LDX feed courtesy of ERA CAYMAN ISLANDS

**\*Disclaimer:** The information contained herein has been furnished by the owner(s) and or their nominee and represented by them to be accurate. The listing company, agent and CIREBA MLS disclaims any liability or responsibility for any inaccuracies, errors or omissions in the represented information. The listing details herein are also courtesy of CIREBA (Cayman Islands Real Estate Brokers Association) MLS and/or via LDX (Listing Data Exchange) feed. All the information contained herein is subject to errors, omissions, price changes, prior sale or withdrawal, without notice and is at all times subject to verification by the purchaser(s).