

---

## **PATRICK'S ISLAND 1.32 ACRES, THREE WATERFRONT PARCELS (MLS#: 419188)**

### DETAILS

---

Price: CI\$1,749,000	MLS#: 419188	Type: Land	Status: Active
Block: 24C	Parcel: 59		
Width: 140	Depth: 320		
Acres: 1.32			

### DESCRIPTION

---

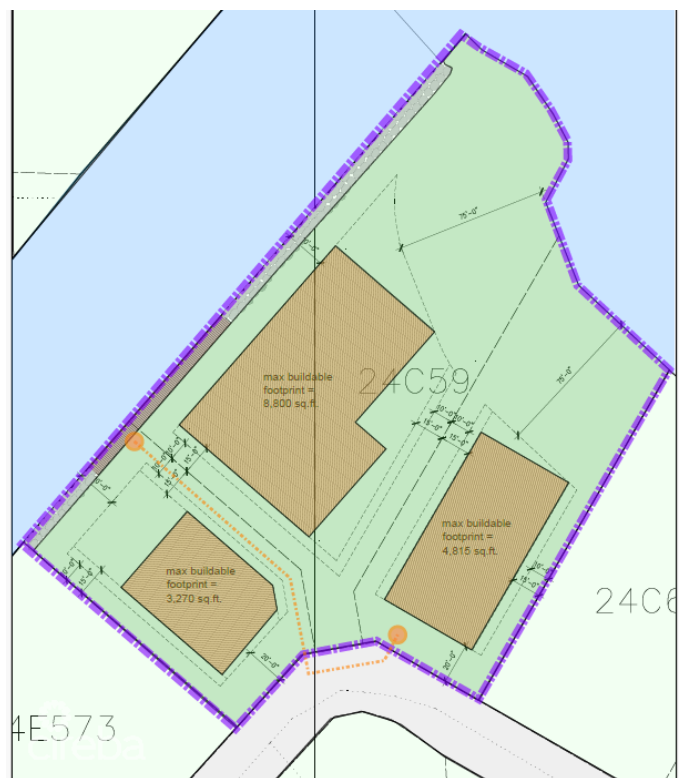
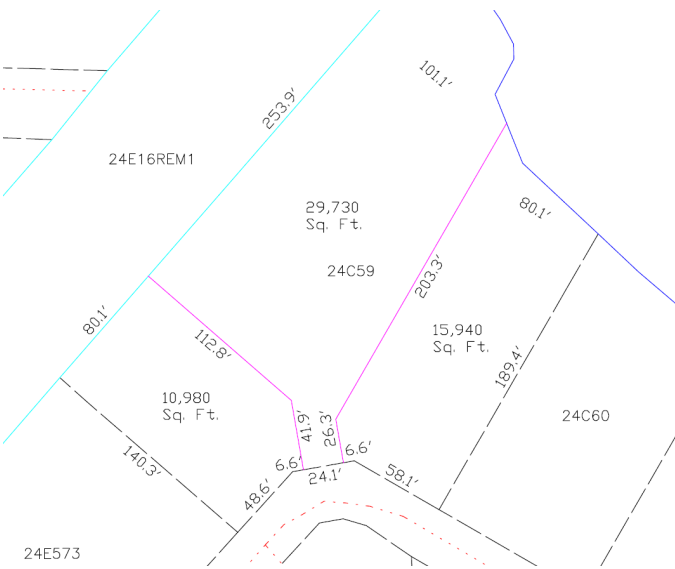
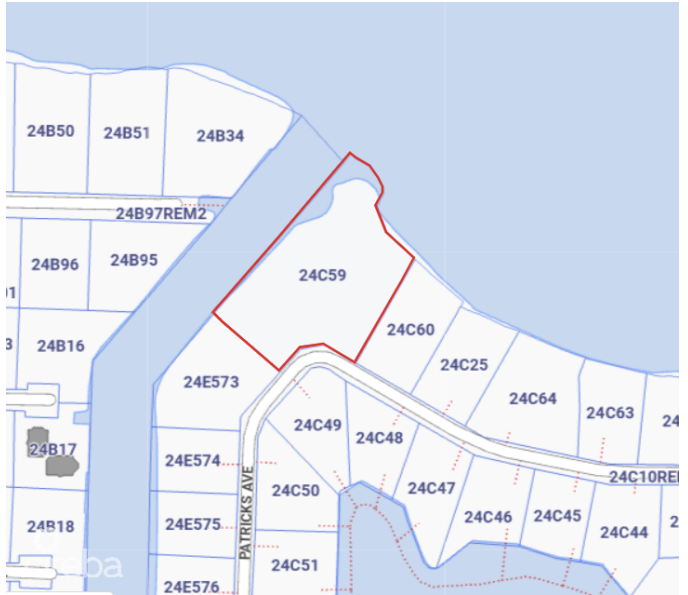
A remarkable opportunity to secure 1.32 acres of prime water front AND canal front land within the esteemed Patrick's Island community. This exclusive package includes Canal, a mini beach entrance and North Sound frontage which translates to the best of both worlds! Designed for that perfect waterfront lifestyle, this property offers peaceful water views, cooling sea breezes, and a North-North-East orientation for the ideal energy efficiency. Available at exceptional value with a significant discount. For more information contact us today. Part agent owned.

### FEATURES

---

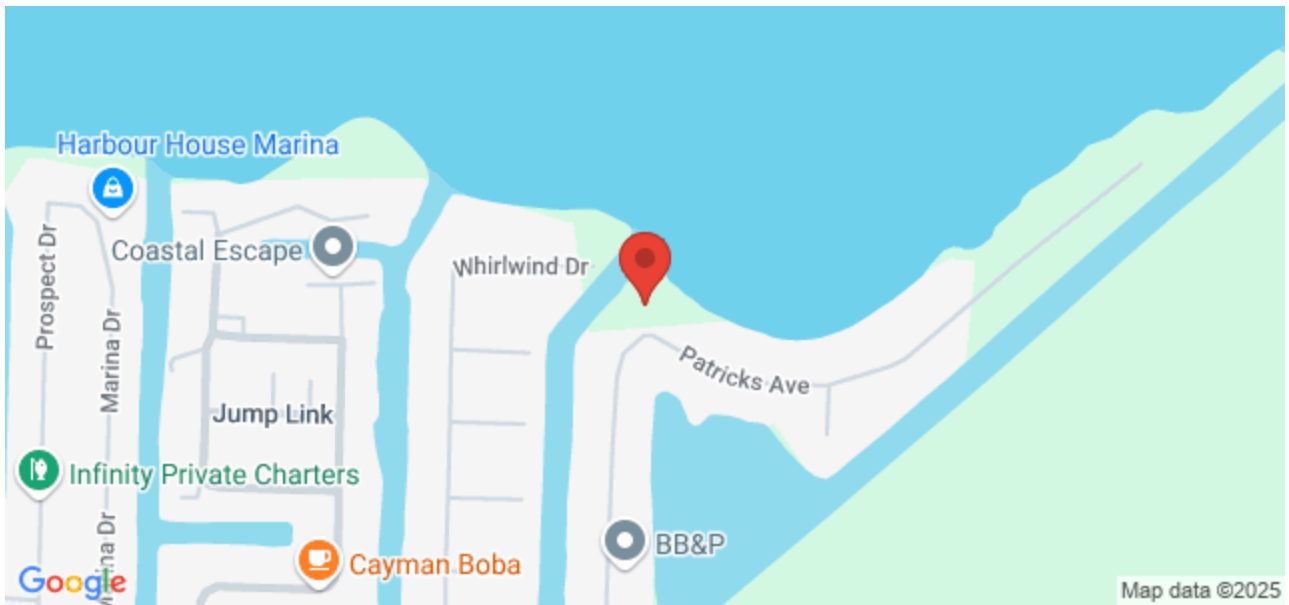
Zoning: Low Density residential

IMAGES



## MAP

---



---

### CIREBA MLS LDX feed courtesy of PROPERTY CAYMAN LTD

**\*Disclaimer:** The information contained herein has been furnished by the owner(s) and or their nominee and represented by them to be accurate. The listing company, agent and CIREBA MLS disclaims any liability or responsibility for any inaccuracies, errors or omissions in the represented information. The listing details herein are also courtesy of CIREBA (Cayman Islands Real Estate Brokers Association) MLS and/or via LDX (Listing Data Exchange) feed. All the information contained herein is subject to errors, omissions, price changes, prior sale or withdrawal, without notice and is at all times subject to verification by the purchaser(s).